

Roller Presses

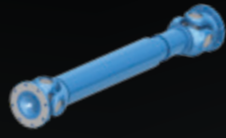
In order to crush ore, roller presses, or high-pressure grinding rolls (HPGR), utilize two counter-rotating rolls — one fixed and one movable. Compared to traditional systems, this design is more stable and efficient.

Roller presses can be used for grinding as well as compacting. The drive power is transferred to the grinding rollers via multi-stage Brevini™ planetary gearboxes, which are mounted on the drive end of the roller shaft using shrink disc coupling or a low-speed flange.



Brevini™ Industrial Planetary Gearboxes – S Series

- Modular customized concept
- Supports torque range up to 2,200 kNm [1,600,000 ft lbs]
- Spheroidal graphite cast iron housing
- Special torque arm system
- Reliable operation, engineered for harsh conditions



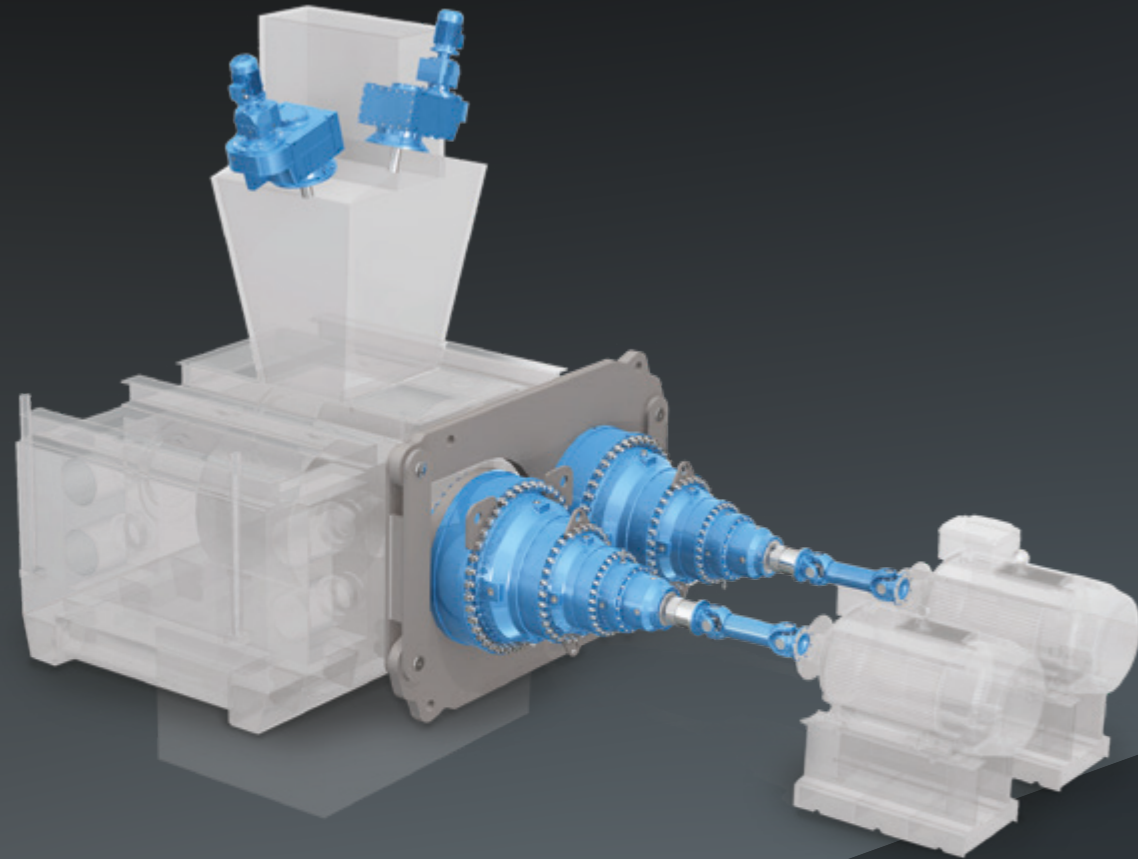
GWB® Industrial Driveshaft

- Complete product range featuring flange / swing diameter from 120 to 1,300 mm
- Superior bearing life
- High torque capacity



Brevini™ Helical Bevel Helical – Gearmotors

- Extensive torque range
- High efficiency
- Diverse low-speed shaft options



We offer customized solutions to meet a range of customer needs, including modular designs and add-on accessories.

Ship-Loaders and Unloaders

These large pieces of equipment are used in shipyards to load and unload solid, bulk material such as iron ore, coal, fertilizer, grain, and others. Generally mounted on rails or sometimes tyres, ship-loaders and unloaders can move to access the length of the ship. Using separate drives, their booms can also move from front to back or up and down in order to fill the breadth of the cargo hold, and adapt to the ship's fluctuating draught while it is being loaded or unloaded. While unloading, even and complete filling of the cargo holds are facilitated by a special telescoping chute with a rotating, pivoting spoon.



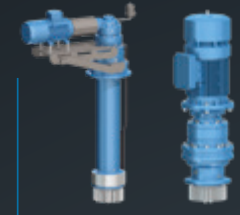
Brevini™ Winches and Winch Drives

- Extensive ratio range
- Supports torque range up to 1,300 kNm [958,900 ft lbs]
- Increased thermal capacity



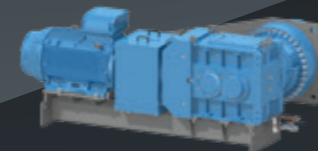
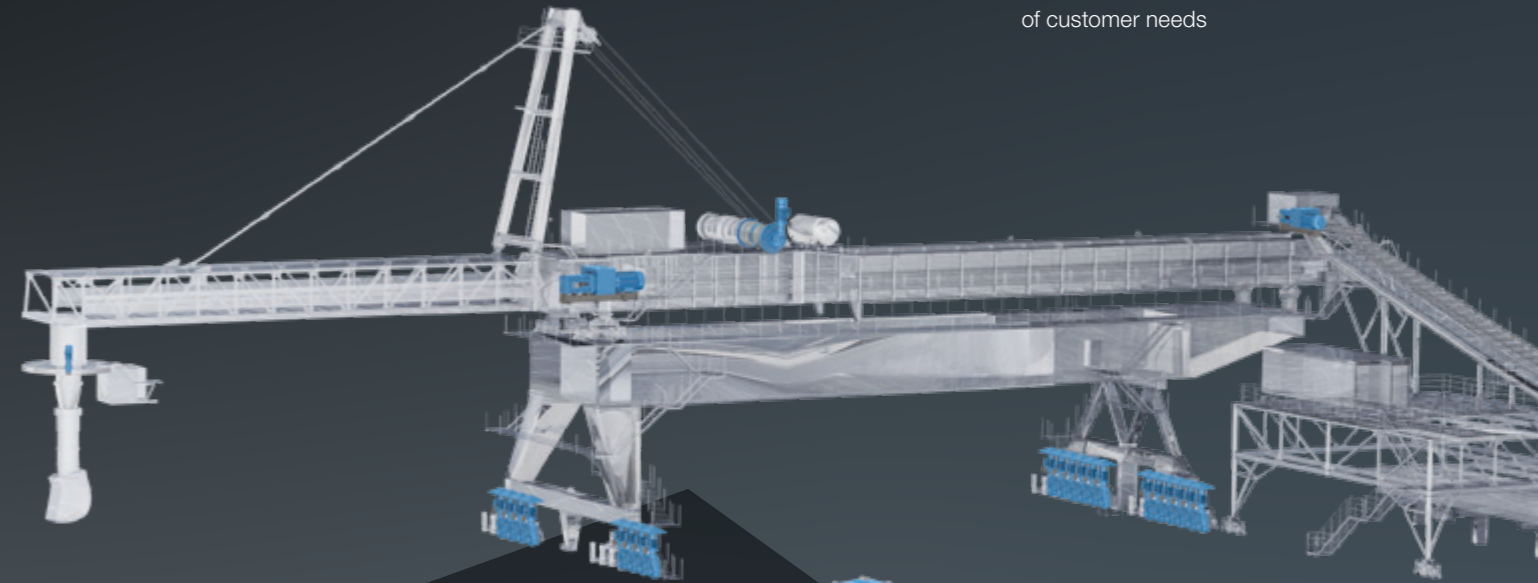
Brevini™ Plano Helical Gearboxes Compact Drives

- Light, compact solution
- Spheroidal graphite cast iron housing
- Supports torque range up to 40 kNm [29,500 ft lbs]



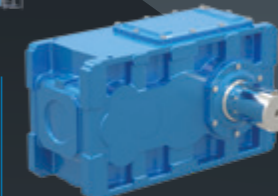
Brevini™ Planetary Gearboxes Slewing Drives

- Modular design, coaxial or right angle
- Customized short or long output support
- Supports torque range up to 370 kNm [272,900 ft lbs]
- Output pinions variation to meet a range of customer needs



Brevini™ Plano Helical Gearboxes High Power Series

- Extensive ratio range
- Supports torque range up to 2,200 kNm [1,600,000 ft lbs]
- Increased thermal capacity due to shared oil chamber
- Spheroidal graphite cast iron housing available



Brevini™ Helical Bevel Helical Series: Brevini EvoMax™ and Posired 2

- Extensive ratio range
- Evomax supports torque range up to 310 kNm [228,700 ft lbs]
- Posired 2 supports torque ranging from 340kNm up to 1,100 kNm [812,000 ft lbs]
- Increased thermal capacity
- Spheroidal graphite cast iron housing available
- Diverse low-speed shaft options